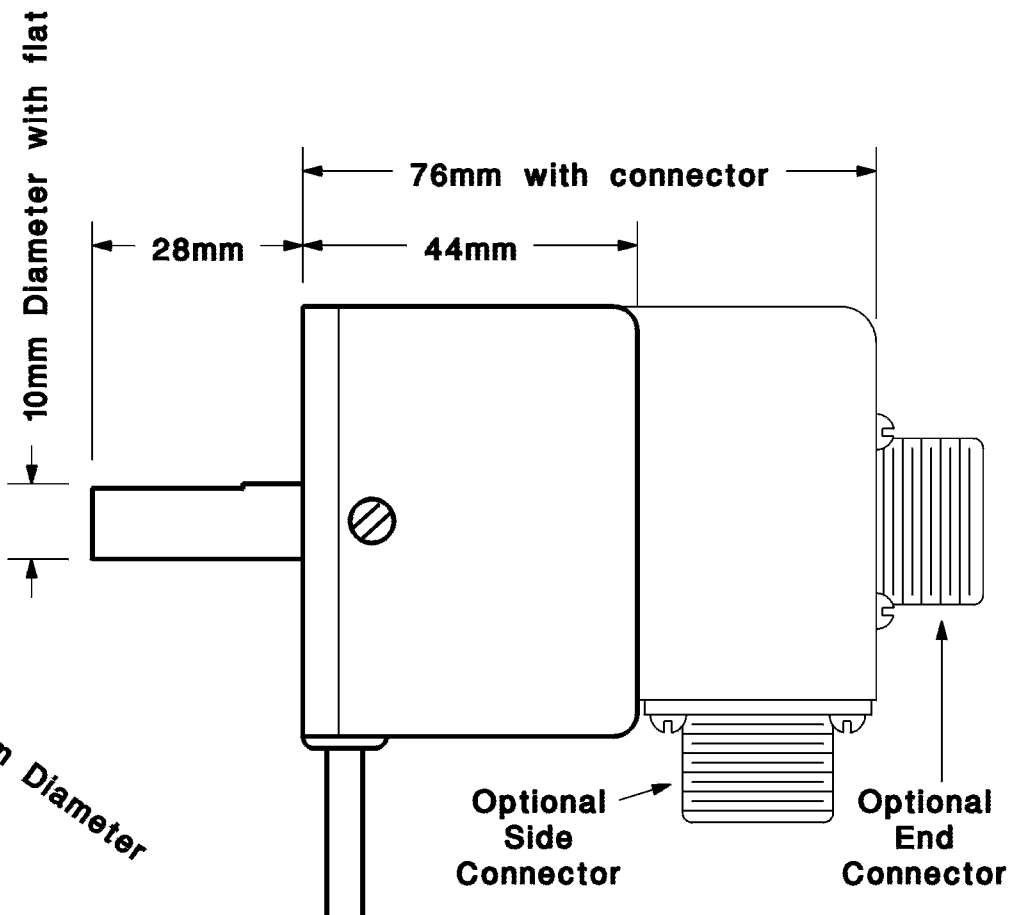
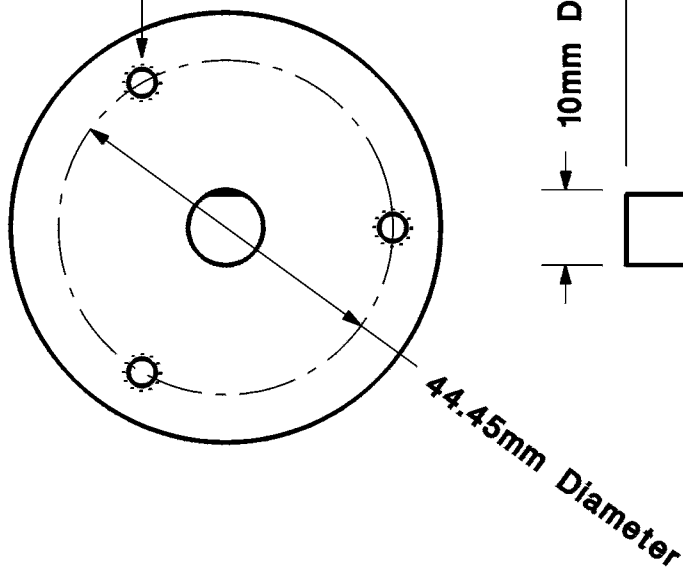


(3) M4 x .7 tap, 6mm deep



See the RG datasheet for more information

Rev	Description	Date	Tolerances	M155 modification: RGB encoder with 10mm shaft and M4 x .7 bolt holes		
			.XXXX ± .0005	BY: TRD	MAT'L:	
			.XXX ± .005	DATE: 4/03/03	FINISH:	SCALE: 1 : 1
			.XX ± .01	PHOTOCRAFT, Inc. Elburn, Illinois 8A155		
			.X ± .015			
			Fractions ± 1/32			
			Angles ± 15 min.			
			Runout ± .003			
			Unless otherwise specified			